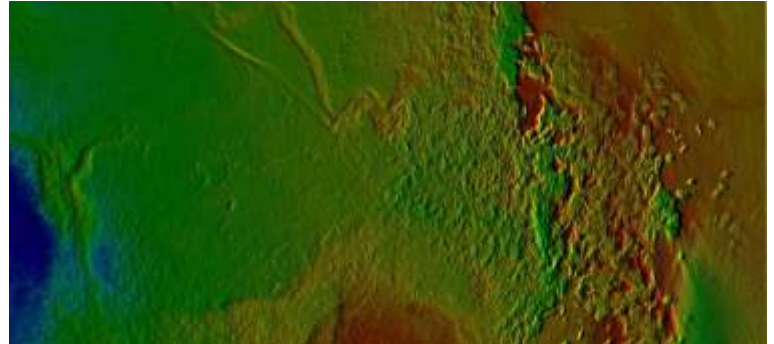


Marine Renewables

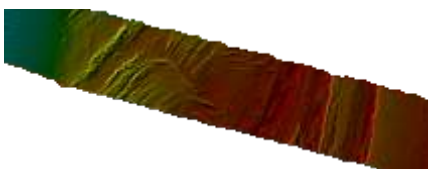
Hydrographic, Geophysical, Met Ocean and Environmental Surveys



Titan Environmental Surveys can offer a highly skilled team of surveyors who are able to undertake all hydrographic, geophysical and MetOcean surveys required for marine renewable projects.

Titan has surveyed and collected MetOcean datasets to support the design, installation and monitoring of Offshore Windfarm, wave and tidal sites around the UK and we fully understand the data requirements.

Titan's team of surveyors are highly experienced in the coastal sector and will work closely with the engineering teams to ensure their data expectations are met. We provide our clients with the highest quality bathymetric, geophysical, oceanographic and environmental information for engineering design, environmental impact assessment and post constructing monitoring, for the lifespan of the renewable energy project.



Application of Services

Hydrographic and Geophysical:

- IHO Special Order/Order 1a bathymetric surveys with high resolution backscatter and/or side-scan sonar surveys
- Shallow seismic sub-bottom profiling (e.g. Boomer) and ultra high resolution (UHR) seismic surveys
- Magnetometer and UXO Surveys
- Scour Monitoring Surveys
- Beach Topographical Surveys

Post-processing services include:

- Pre-construction reconnaissance surveys (seabed topography, sediment transport, anthropological activities/ debris/UXO location, geological profiling- (mapping of sediments, rockhead etc)
- Post construction monitoring of seabed, sediment transport, scour and erosion studies.

Met Ocean

- Wave and Current Monitoring
- Sediment Dynamics
- Turbulence
- Turbine Wake Studies
- Tides
- Multi Parameter Profiling
- Real Time Monitoring

Environmental

- Water Quality Sampling
- Visual Sampling Techniques
- Sediment Sampling
- Benthic Sampling
- Fish surveys