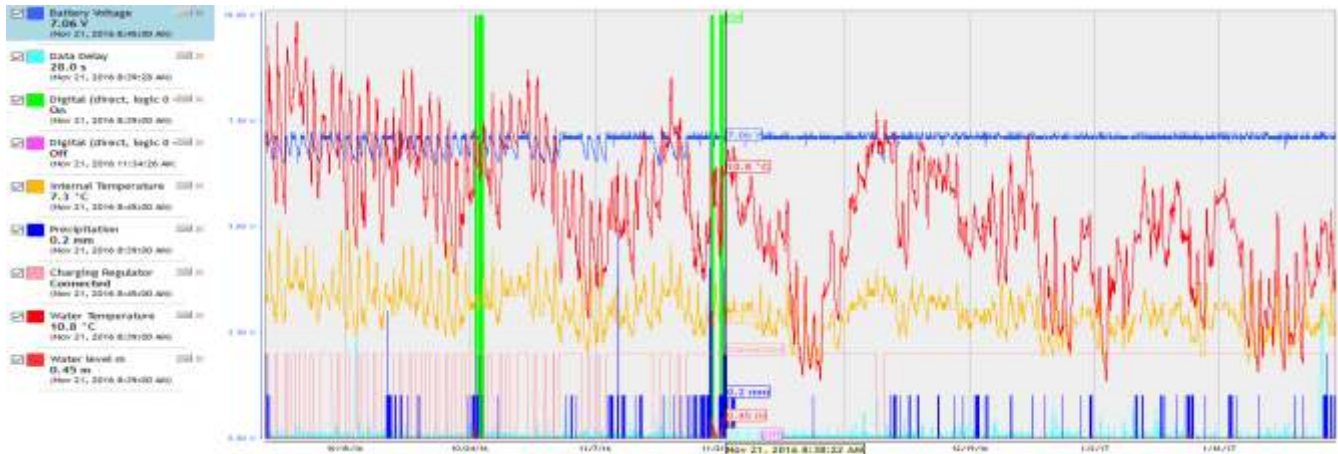


Telemetry Data Systems

Environmental Surveys



Titan are highly experienced in providing telemetered data systems as a solution for almost any environmental monitoring requirement. With in-house design capability, data from monitoring outstations can be displayed to any required level of detail on a web portal.

Titan have deployed and maintained telemetry systems in many environments, including estuarine, riverine, landfill sites water company assets and sewer networks, with some systems being in place for over 5 years.



Satellite Tracking



Temperature Monitoring

Monitoring Capabilities:

Titan Environmental acquire high precision hydrographic, oceanographic and geophysical data. This is subsequently post processed in-house, often being integrated with client supplied archive material

Reporting services include:

- Event triggered sampling (triggered on any water quality parameter)
- Temperature monitoring networks
- Water Quality data recording
- Pumping station operation monitoring
- Rainfall monitoring
- Flow monitoring
- Tide gauge and surge monitoring

Instrumentation and Capabilities:

- Hydro lab water quality instruments
- Wet chemistry water quality instrumentation
- High accuracy, fast response temperature monitoring
- Ex certified flow monitoring equipment
- Waverider buoys
- Sea bed mounted solutions
- Radio, gprs and satellite communication options